



OPERATING & ASSEMBLY INSTRUCTION

NAC3MX-W-TOP | powerCON® TRUE1 TOP

A. APPLICATION INSTRUCTION

Application:

The powerCON TRUE1 system is certified as a connector with breaking capacity according IEC 60320, VDE 0625. It is intended for use as an appliance coupler and interconnection coupler. It serves to supply power to an appliance and from an appliance to other equipment. To be installed by qualified person only.

CONNECTOR ASSIGNMENT:

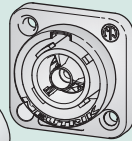
APPLIANCE INLET

NAC3MPX-TOP
NAC3MPX-WOT-TOP
Power IN



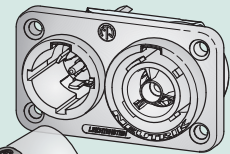
APPLIANCE OUTLET

NAC3FPX-TOP
NAC3FPX-WOT-TOP
NAC3FPX-ST-TOP
Power OUT



APPLIANCE INLET / OUTLET ► Combination

NAC3PX-TOP
Power IN



Power OUT

NAC3FX-W-TOP
(Connector)

NAC3MX-W-TOP
(Plug connector)

NAC3FX-W-TOP
(Connector)

NAC3MX-W-TOP
(Plug connector)

powerCON TRUE1 TOP line is full backward compatible with the preceding powerCON TRUE1 products.

Approval based:

VDE

EN 60320-1/EN60320-2-2



UL

UL 498 / CSA C22.2 No. 182.3



Rating:

250 V ac / 16 A

250 V ac / 20 A

Cable Type:

H05VV-F3G 1.0 mm², Length max. 2 m
H05VV-F3G 1.5 - 2.5 mm²
H07RN-F3G 1.5 mm²

SJTOW, SJOOW 3 x 12 AWG

Strain Relief:

White chuck

White chuck

Cable O.D.:

6.0 - 12.0 mm

6.0 - 12.0 mm

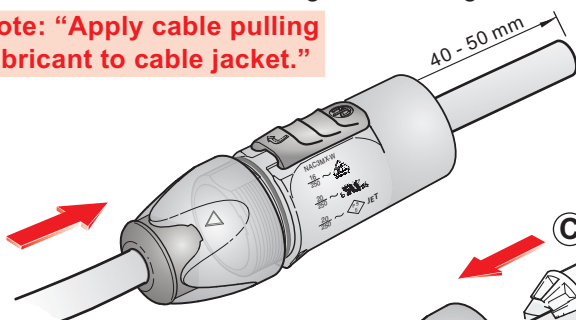
UL50E environmental rating

Enclosure Type 4 when mated with cord connector NAC3FX-W-TOP or mated with appliance outlet NAC3FPX*-TOP with sealing cover SCNAC-FPX and NAC3PX-TOP with sealing cover SCNAC-PX.

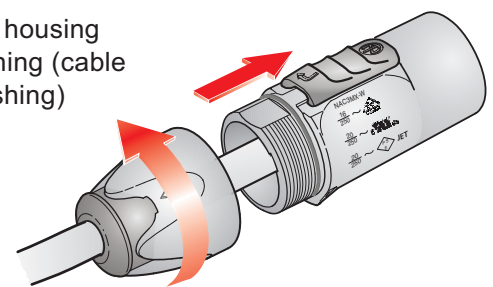
B. ASSEMBLY INSTRUCTION

- A** Insert cable into the bushing and housing.

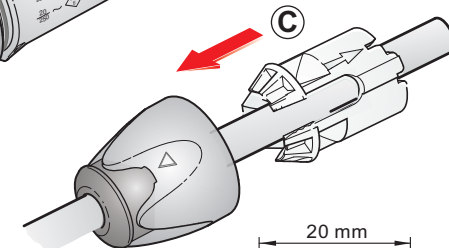
Note: "Apply cable pulling lubricant to cable jacket."



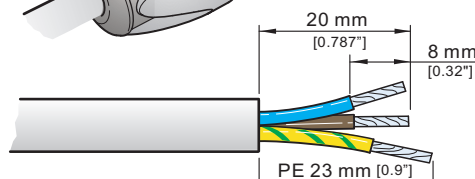
- B** Separate the housing from the bushing (cable remain in bushing)



- C** Place the chuck over the cable.

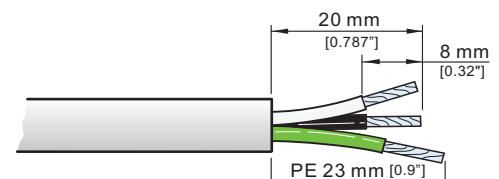


- D** Prepare the cable as shown.



VDE (EN 60320-1/EN60320-2-2)

- i Recommendation:**
Wire Pulling Lubricant - LUB-I/0.95 from 3M™



UL (UL 498 / CSA C22.2 No. 182.3)



E

Torx size T8
Torque Value 0.7 Nm

| Wiring | VDE | UL |
|--------|----------------|-------|
| L → | brown | black |
| N → | blue | white |
| ⊥ → | green / yellow | green |

Insert the wires into the terminals and fasten the screw with Torx size T8.

F

Important: Align rubber key and latch.

Slide the chuck onto the insert (1) and then both together into housing (2).
Important: Align the chuck and insert by positioning the nose into the keyway.

G

Torque Value 2.0 Nm
PRESS FIRMLY

Wrench size 13 mm

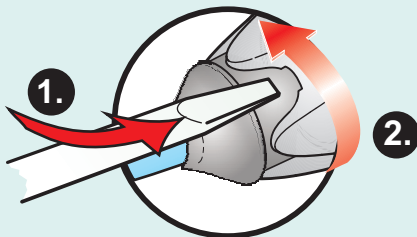
Slide the bushing up the cable and tighten it with the tool as shown.
Important: Black O-ring to hide to achieve IP protection (6).

(Tool available: Art. No. HTAC)

Find more details of powerCON TRUE1 TOP on www.neutrik.com.

FOR DISASSEMBLY - OPEN TWIST LOCK!

- Press with screw driver to unlock
- Turn bushing 360°.
- Repeat step ①+② until bushing is unscrewed.



CAUTION

FORCE

To ensure protection category, do not expose the connection to bending forces (e.g. do not attach loads to the cable, no free-dangling cable windings etc.).

SAFETY WARNING

For safety and certification reasons the connector must be replaced in case of any broken parts or excessive wear and tear.

| | | | | | | | |
|------------------------|-------------|-----------------------|---------------------|-------------------------|-----|----------------------|---------------------|
| Neutrik AG | LI | T: +423 / 237 24 24 | F: +423/232 53 93 | Neutrik France | FR | T: +33 1/4131 6750 | F: +33 1/4131 0511 |
| Neutrik USA Inc. | USA | T: +1 704 / 972 3050 | F: +1 704/438 9202 | Neutrik Tokyo Ltd. | JP | T: +81 3/3663 4733 | F: +81 3/3663 4796 |
| Neutrik (UK) Ltd. | UK | T: +44 1983 / 811 441 | F: +44 1983/811 439 | Neutrik Hong Kong Ltd. | HK | T: +852/2687 6055 | F: +852/2687 6052 |
| Neutrik Vertriebs GmbH | DE/NL/AT/DK | T: +49 8131 / 280 890 | F: +49 8131/280 830 | Neutrik India Pvt. Ltd. | IND | T: +91/982 05 43 424 | F: +91/22 26163 540 |

Draft. Nr.: BDA 542 | Update: 11.07.2018 | Data subject to change without prior notice. © 2018 NEUTRIK®. NEUTRIK® are registered trademark of NEUTRI AG. ALL RIGHTS RESERVED.